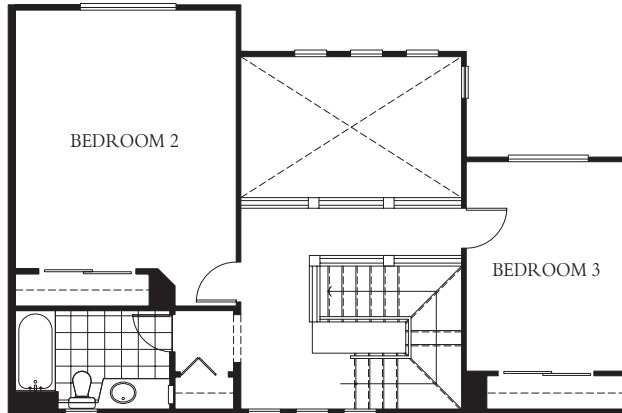


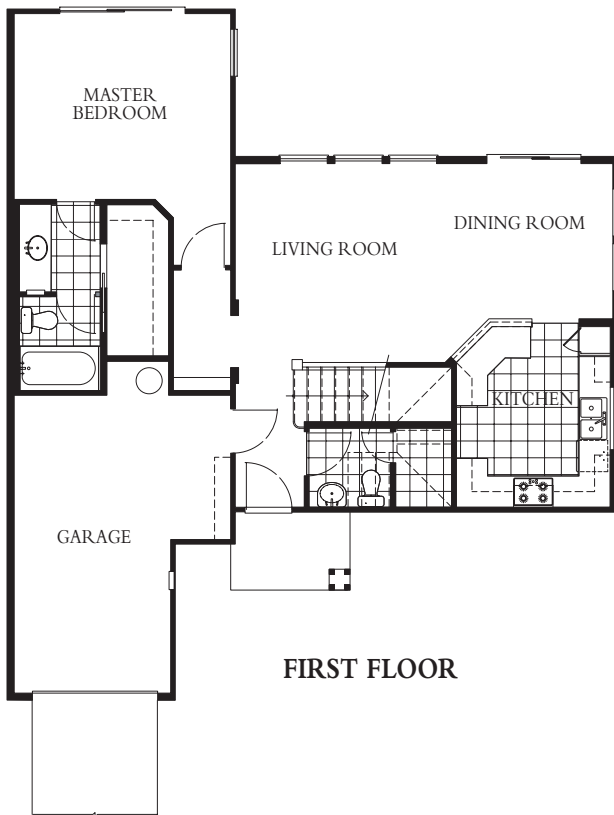


Hawaii Kai

PENINSULA



SECOND FLOOR



FIRST FLOOR

THE COTTAGES

PLAN ONE

LIVING AREA	1,465
LANAI	(37)
GARAGE	231
TOTAL	(1,835)

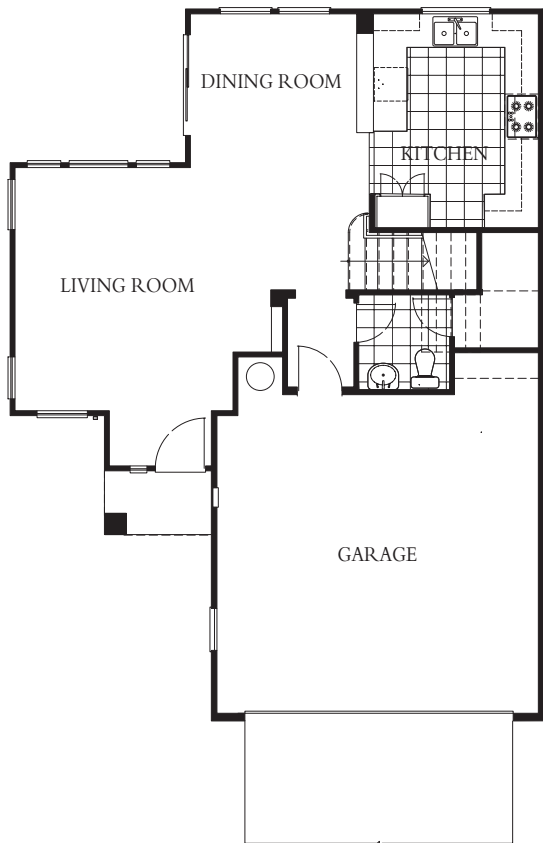
3 BEDROOMS/2.5 BATHROOMS

The floorplans shown are a fair representation to assist the public in visualizing the interiors and may not be accurately depicted. The developer reserves the right to modify plans, specifications, materials and prices without prior notice or obligation. All square footages are approximate, see the contingent final public report for net living area. The floor plans of the model homes are unique and different than the standard floor plans.

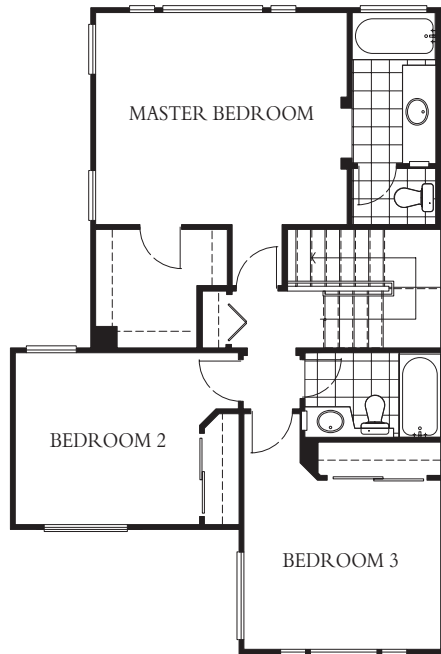


Hawaii Kai

PENINSULA



FIRST FLOOR



SECOND FLOOR

THE COTTAGES

PLAN TWO

LIVING AREA	1,329
LANAI	(24)
GARAGE	314
TOTAL	(1,833)

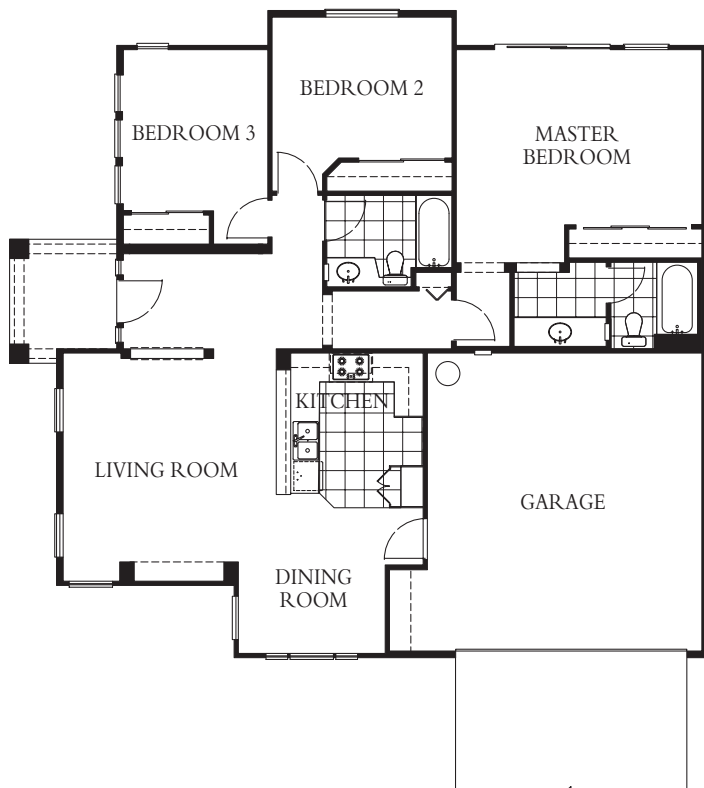
3 BEDROOMS/2.5 BATHROOMS

The floorplans shown are a fair representation to assist the public in visualizing the interiors and may not be accurately depicted. The developer reserves the right to modify plans, specifications, materials and prices without prior notice or obligation. All square footages are approximate, see the contingent final public report for net living area. The floor plans of the model homes are unique and different than the standard floor plans.



Hawaii Kai

PENINSULA



FIRST FLOOR

THE COTTAGES

PLAN THREE

LIVING AREA	1,297
LANAI	(57)
GARAGE	402
TOTAL	(1,844)

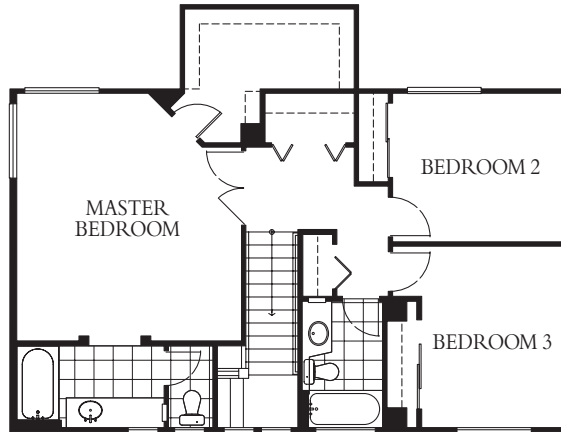
3 BEDROOMS/2 BATHROOMS

The floorplans shown are a fair representation to assist the public in visualizing the interiors and may not be accurately depicted. The developer reserves the right to modify plans, specifications, materials and prices without prior notice or obligation. All square footages are approximate, see the contingent final public report for net living area. The floor plans of the model homes are unique and different than the standard floor plans.

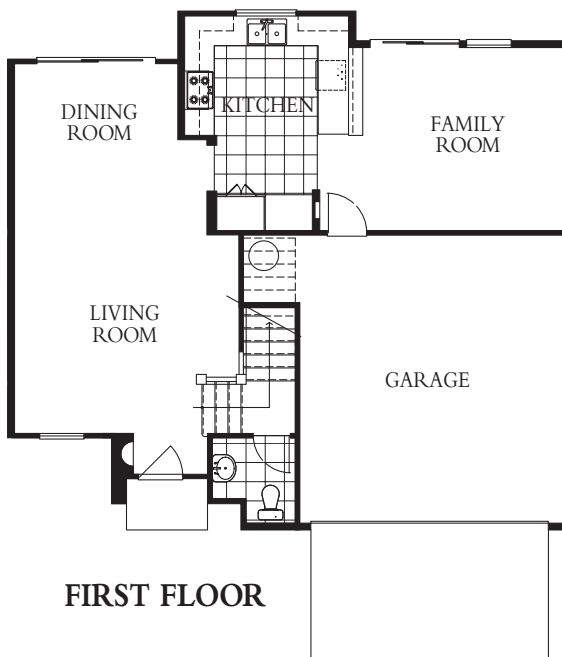


Hawaii Kai

PENINSULA



SECOND FLOOR



FIRST FLOOR

THE COTTAGES

PLAN FOUR

LIVING AREA	1,581
LANAI	(9)
GARAGE	343
TOTAL	(2,086)

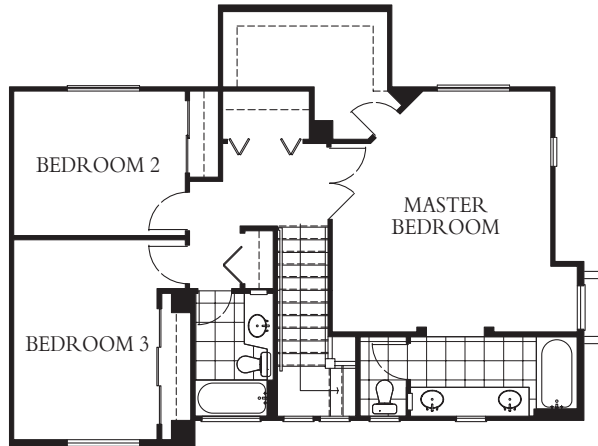
3 BEDROOMS/2.5 BATHROOMS

The floorplans shown are a fair representation to assist the public in visualizing the interiors and may not be accurately depicted. The developer reserves the right to modify plans, specifications, materials and prices without prior notice or obligation. All square footages are approximate, see the contingent final public report for net living area. The floor plans of the model homes are unique and different than the standard floor plans.

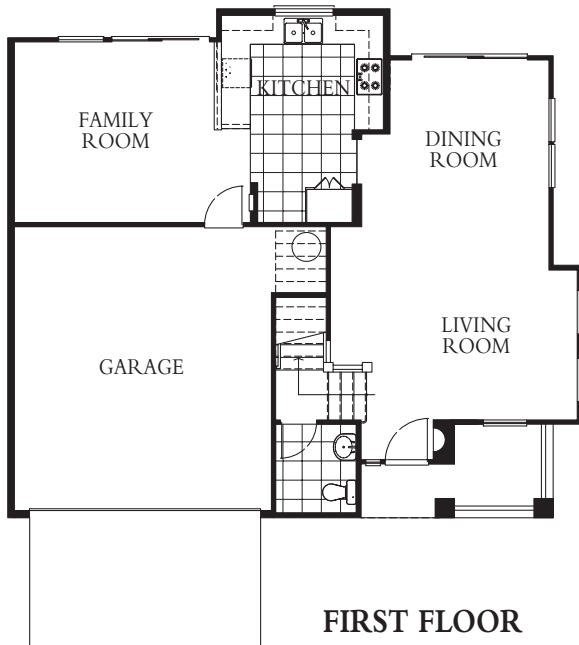


Hawaii Kai

PENINSULA



SECOND FLOOR



FIRST FLOOR

THE COTTAGES

PLAN FIVE

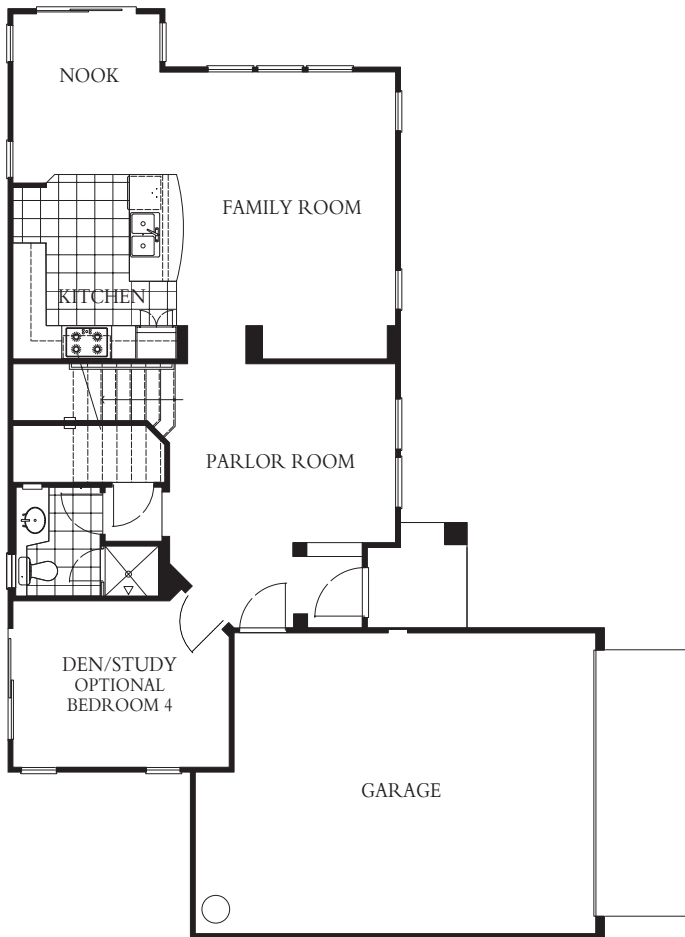
LIVING AREA	1,649
LANAI	(69)
GARAGE	362
TOTAL	(2,206)

3 BEDROOMS/2.5 BATHROOMS

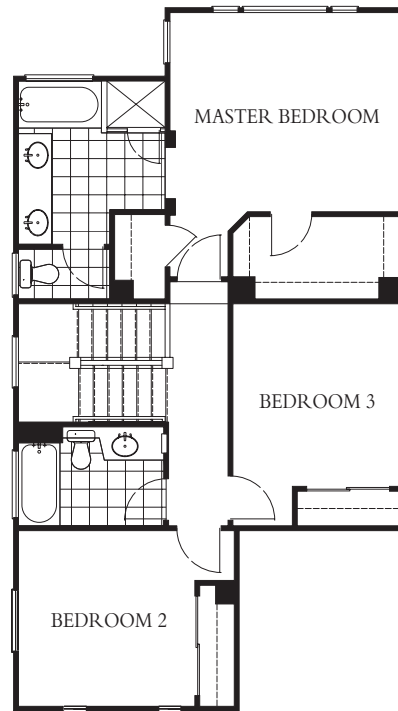
The floorplans shown are a fair representation to assist the public in visualizing the interiors and may not be accurately depicted. The developer reserves the right to modify plans, specifications, materials and prices without prior notice or obligation. All square footages are approximate, see the contingent final public report for net living area. The floor plans of the model homes are unique and different than the standard floor plans.



Hawaii Kai PENINSULA



FIRST FLOOR



SECOND FLOOR

THE COTTAGES

PLAN SIX

LIVING AREA	1,640
LANAI	(37)
GARAGE	412
TOTAL	(2,202)

3 BEDROOMS/3 BATHROOMS

The floorplans shown are a fair representation to assist the public in visualizing the interiors and may not be accurately depicted. The developer reserves the right to modify plans, specifications, materials and prices without prior notice or obligation. All square footages are approximate, see the contingent final public report for net living area. The floor plans of the model homes are unique and different than the standard floor plans.