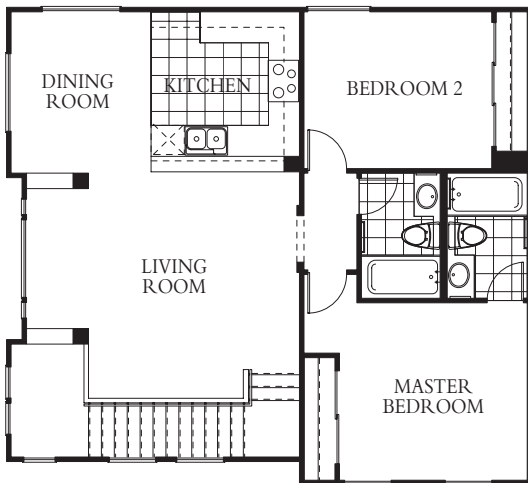


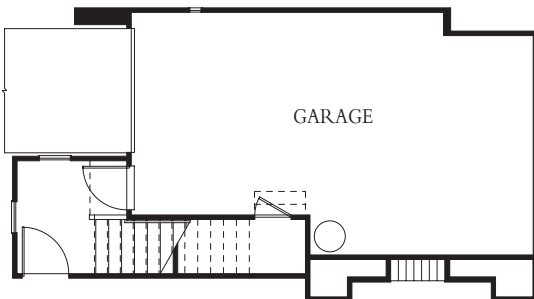


Hawaii Kai

PENINSULA



SECOND FLOOR



FIRST FLOOR

THE VILLAS

PLAN ONE

LIVING AREA	1,038
GARAGE	387
TOTAL	1,425

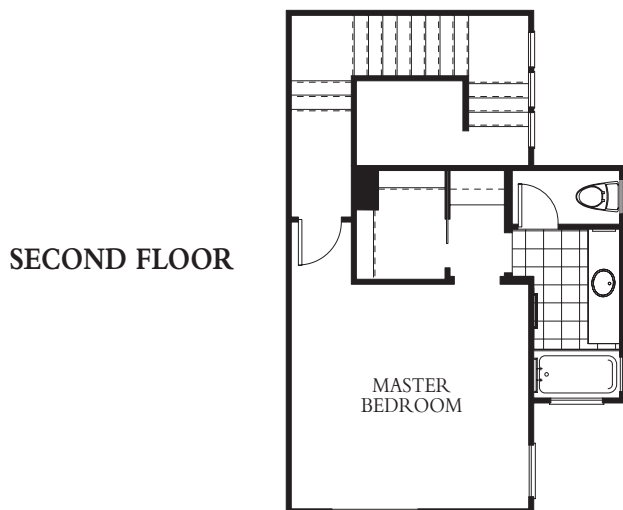
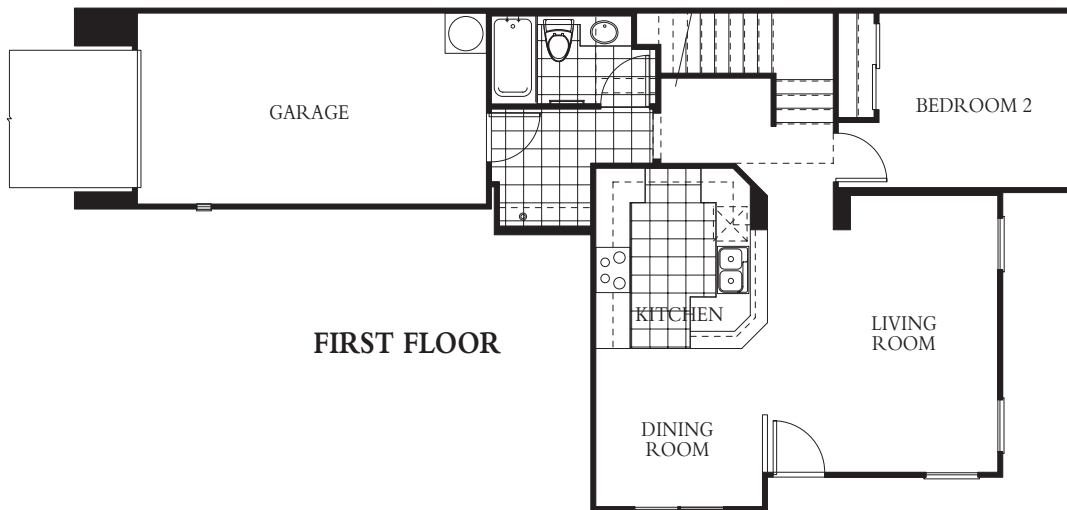
2 BEDROOMS/2 BATHROOMS

The floorplans shown are a fair representation to assist the public in visualizing the interiors and may not be accurately depicted. The developer reserves the right to modify plans, specifications, materials and prices without prior notice or obligation. All square footages are approximate, see the contingent final public report for net living area. The floor plans of the model homes are unique and different than the standard floor plans.



Hawaii Kai

PENINSULA



THE VILLAS

PLAN TWO

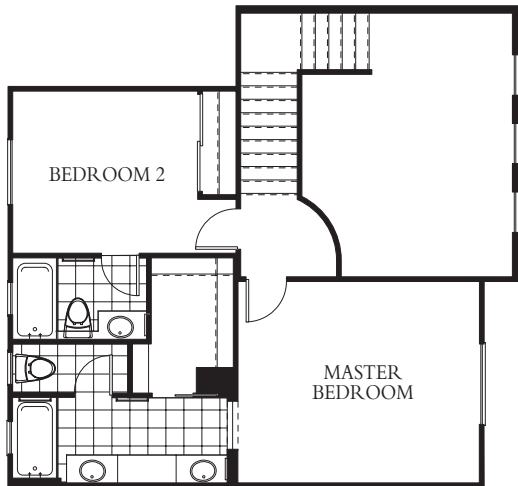
LIVING AREA	1,175
GARAGE	241
TOTAL	1,416

2 BEDROOMS/2 BATHROOMS

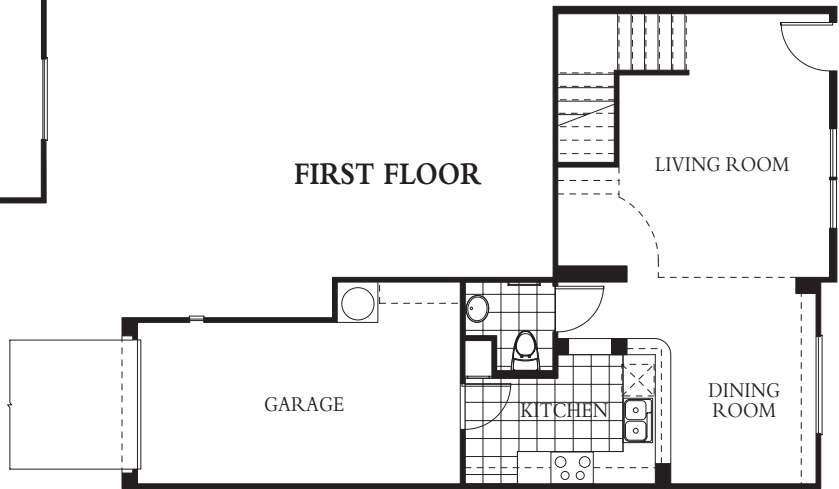
The floorplans shown are a fair representation to assist the public in visualizing the interiors and may not be accurately depicted. The developer reserves the right to modify plans, specifications, materials and prices without prior notice or obligation. All square footages are approximate, see the contingent final public report for net living area. The floor plans of the model homes are unique and different than the standard floor plans.



Hawaii Kai PENINSULA



SECOND FLOOR



FIRST FLOOR

THE VILLAS

PLAN THREE

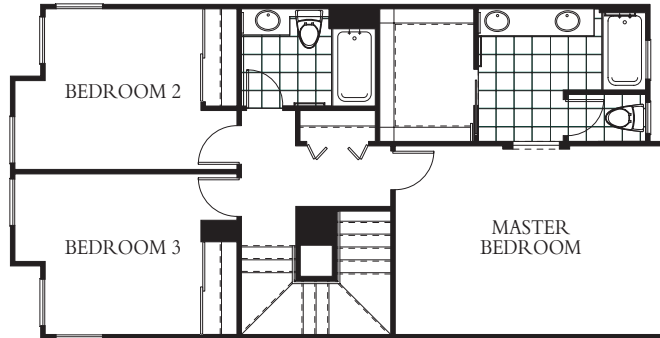
LIVING AREA	1,159
GARAGE	235
TOTAL	1,394

2 BEDROOMS/2.5 BATHROOMS

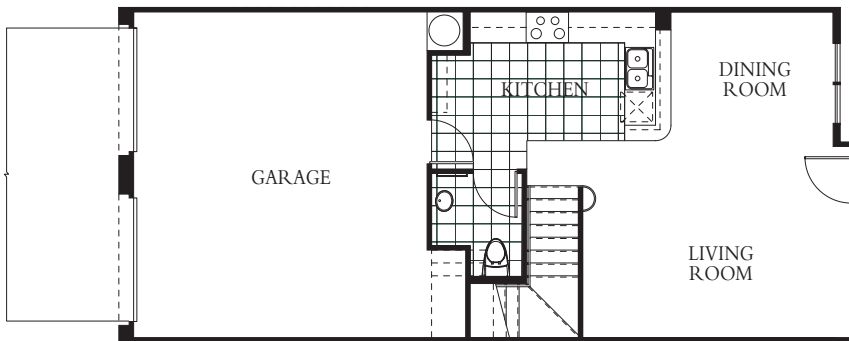
The floorplans shown are a fair representation to assist the public in visualizing the interiors and may not be accurately depicted. The developer reserves the right to modify plans, specifications, materials and prices without prior notice or obligation. All square footages are approximate, see the contingent final public report for net living area. The floor plans of the model homes are unique and different than the standard floor plans.



Hawaii Kai PENINSULA



SECOND FLOOR



FIRST FLOOR

THE VILLAS

PLAN FOUR

LIVING AREA	1,403
GARAGE	440
TOTAL	1,843

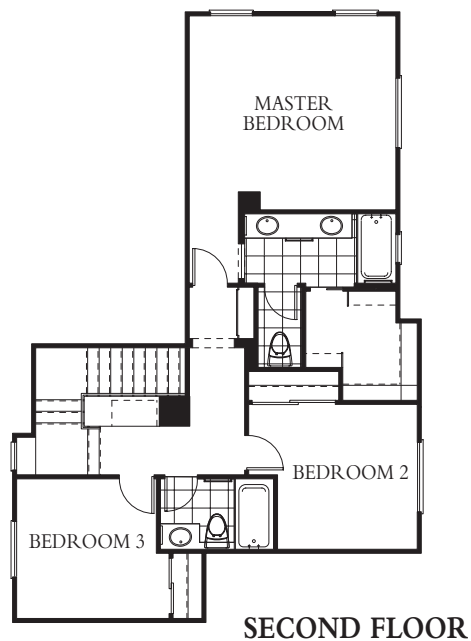
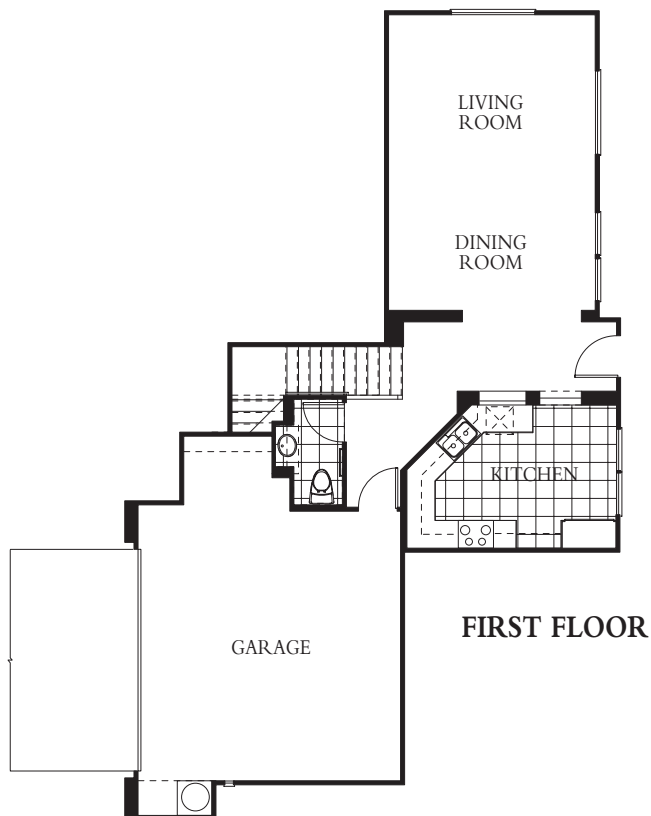
3 BEDROOMS/2.5 BATHROOMS

The floorplans shown are a fair representation to assist the public in visualizing the interiors and may not be accurately depicted. The developer reserves the right to modify plans, specifications, materials and prices without prior notice or obligation. All square footages are approximate, see the contingent final public report for net living area. The floor plans of the model homes are unique and different than the standard floor plans.



Hawaii Kai

PENINSULA



THE VILLAS

PLAN FIVE

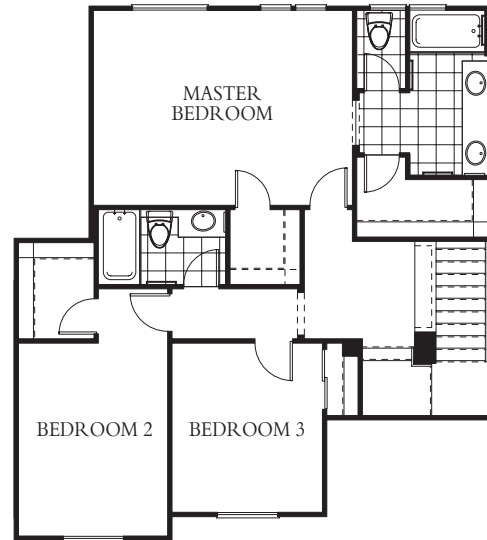
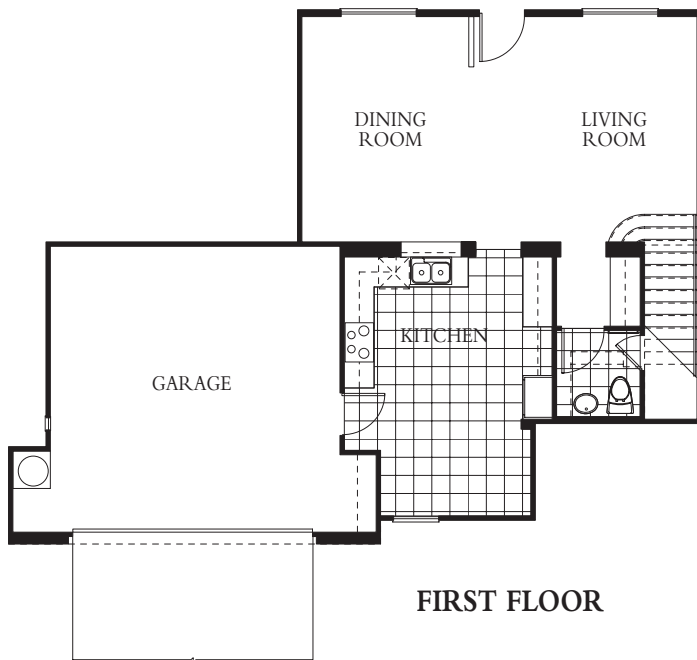
LIVING AREA	1,556
GARAGE	446
TOTAL	2,002

3 BEDROOMS/2.5 BATHROOMS

The floorplans shown are a fair representation to assist the public in visualizing the interiors and may not be accurately depicted. The developer reserves the right to modify plans, specifications, materials and prices without prior notice or obligation. All square footages are approximate, see the contingent final public report for net living area. The floor plans of the model homes are unique and different than the standard floor plans.



Hawaii Kai PENINSULA



THE VILLAS

PLAN SIX

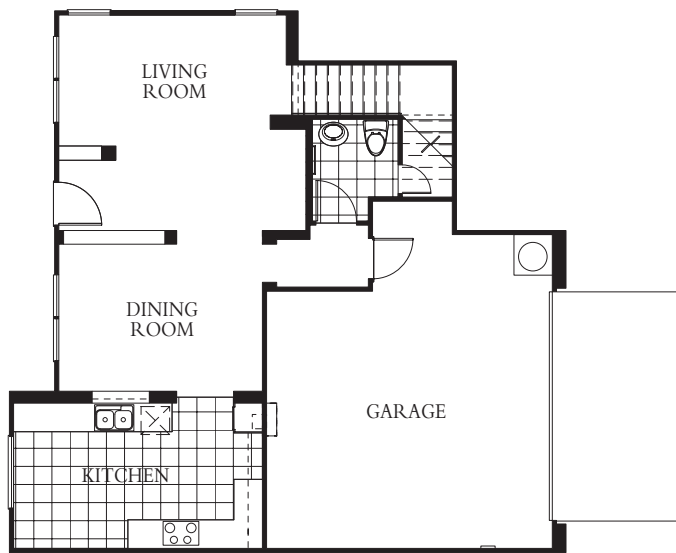
LIVING AREA	1,671
GARAGE	415
TOTAL	2,086

3 BEDROOMS/2.5 BATHROOMS

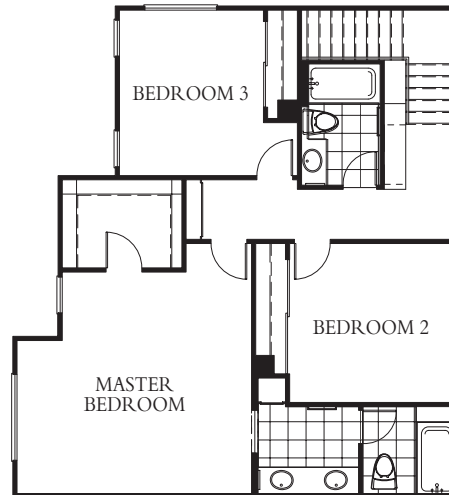
The floorplans shown are a fair representation to assist the public in visualizing the interiors and may not be accurately depicted. The developer reserves the right to modify plans, specifications, materials and prices without prior notice or obligation. All square footages are approximate, see the contingent final public report for net living area. The floor plans of the model homes are unique and different than the standard floor plans.



Hawaii Kai PENINSULA



FIRST FLOOR



SECOND FLOOR

THE VILLAS

PLAN SEVEN

LIVING AREA	1,680
GARAGE	438
TOTAL	2,118

3 BEDROOMS/2.5 BATHROOMS

The floorplans shown are a fair representation to assist the public in visualizing the interiors and may not be accurately depicted. The developer reserves the right to modify plans, specifications, materials and prices without prior notice or obligation. All square footages are approximate, see the contingent final public report for net living area. The floor plans of the model homes are unique and different than the standard floor plans.