



# MAUNALEO

AT KEHALANI

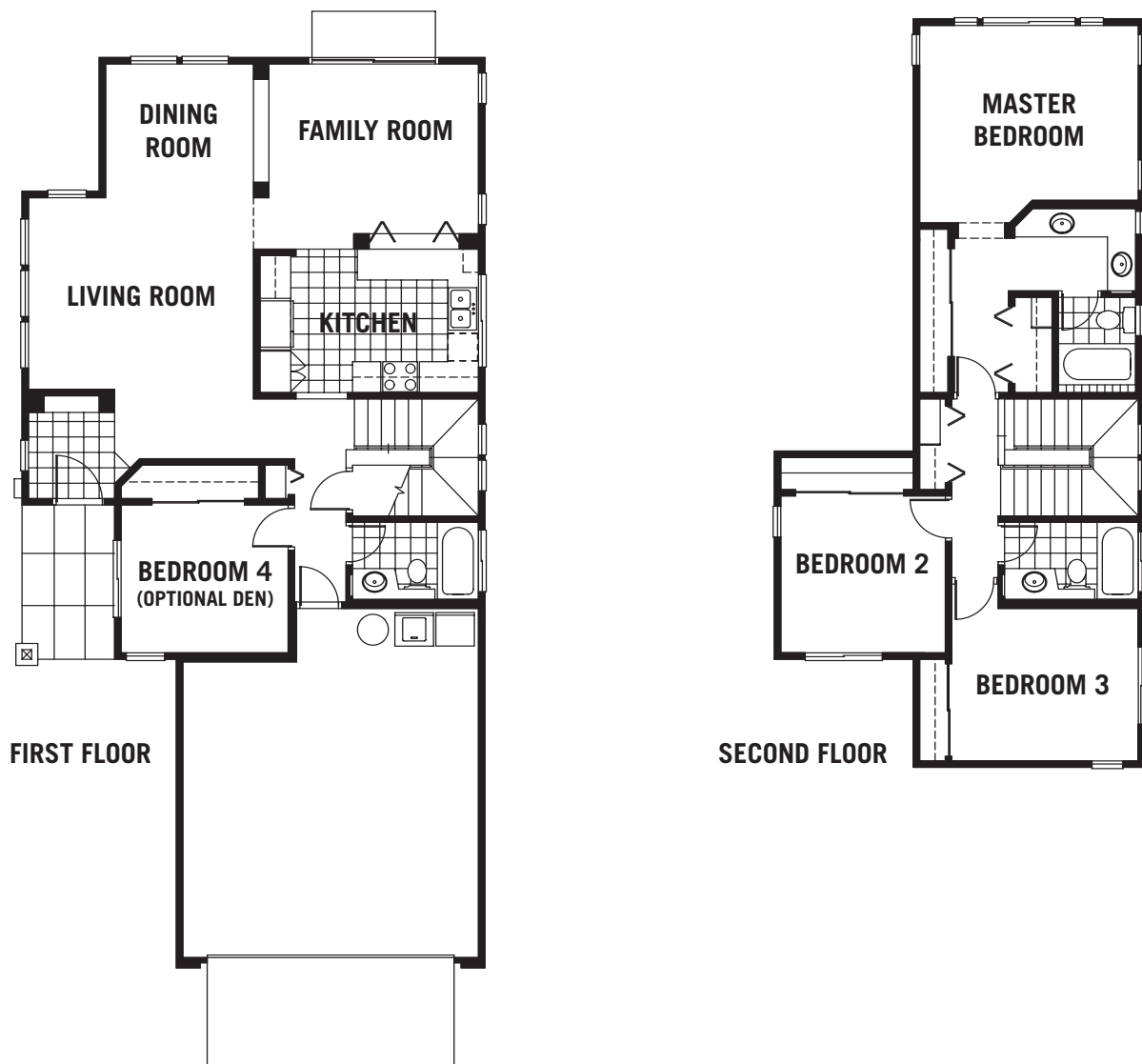
## PLAN 4

**4 BEDROOM / 3 BATH**

**LIVING AREA      1,809**

**GARAGE             433**

**TOTAL                2,242**



The floor plans shown are a fair representation to assist the public in visualizing the interiors and may not accurately be depicted. The developer reserves the right to modify plans, specifications, materials and prices without prior notice or obligation. All square footages and figures are approximate. Pacific Island Realty, LLC