



MAUNALEO

AT KEHALANI

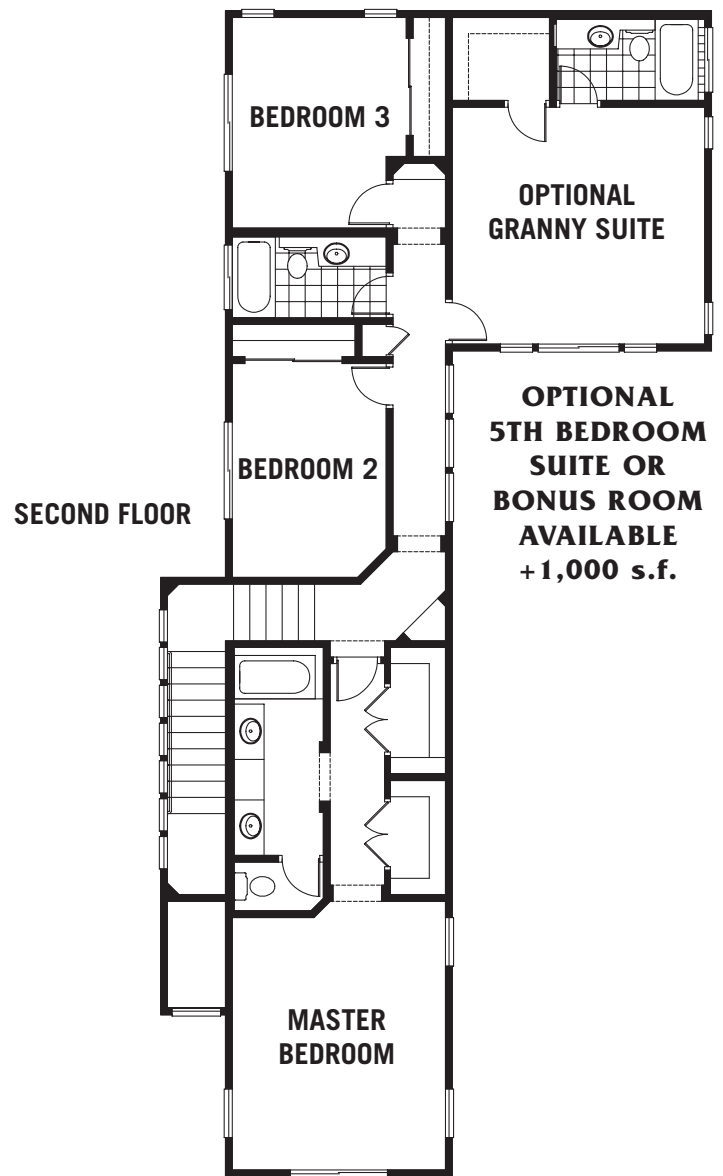
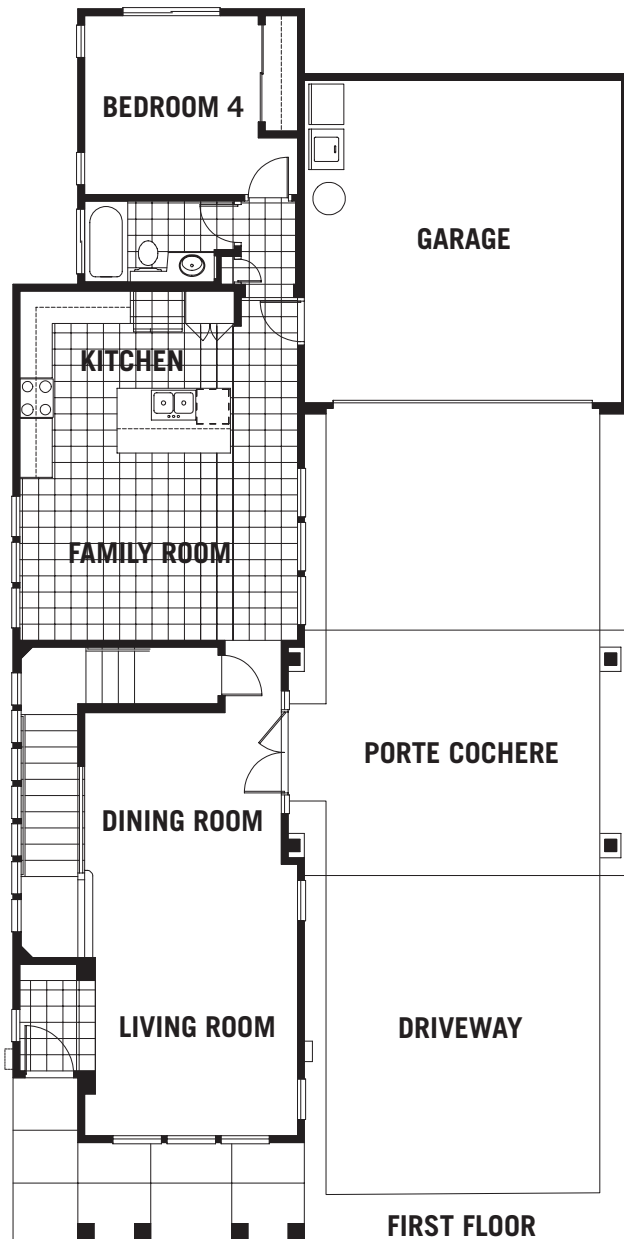
PLAN 5

4 BEDROOM / 3 BATH

LIVING AREA 2,152

GARAGE 414

TOTAL 2,566



The floor plans shown are a fair representation to assist the public in visualizing the interiors and may not accurately be depicted.

The developer reserves the right to modify plans, specifications, materials and prices without prior notice or obligation.

All square footages and figures are approximate. Pacific Island Realty, LLC